

Signbox



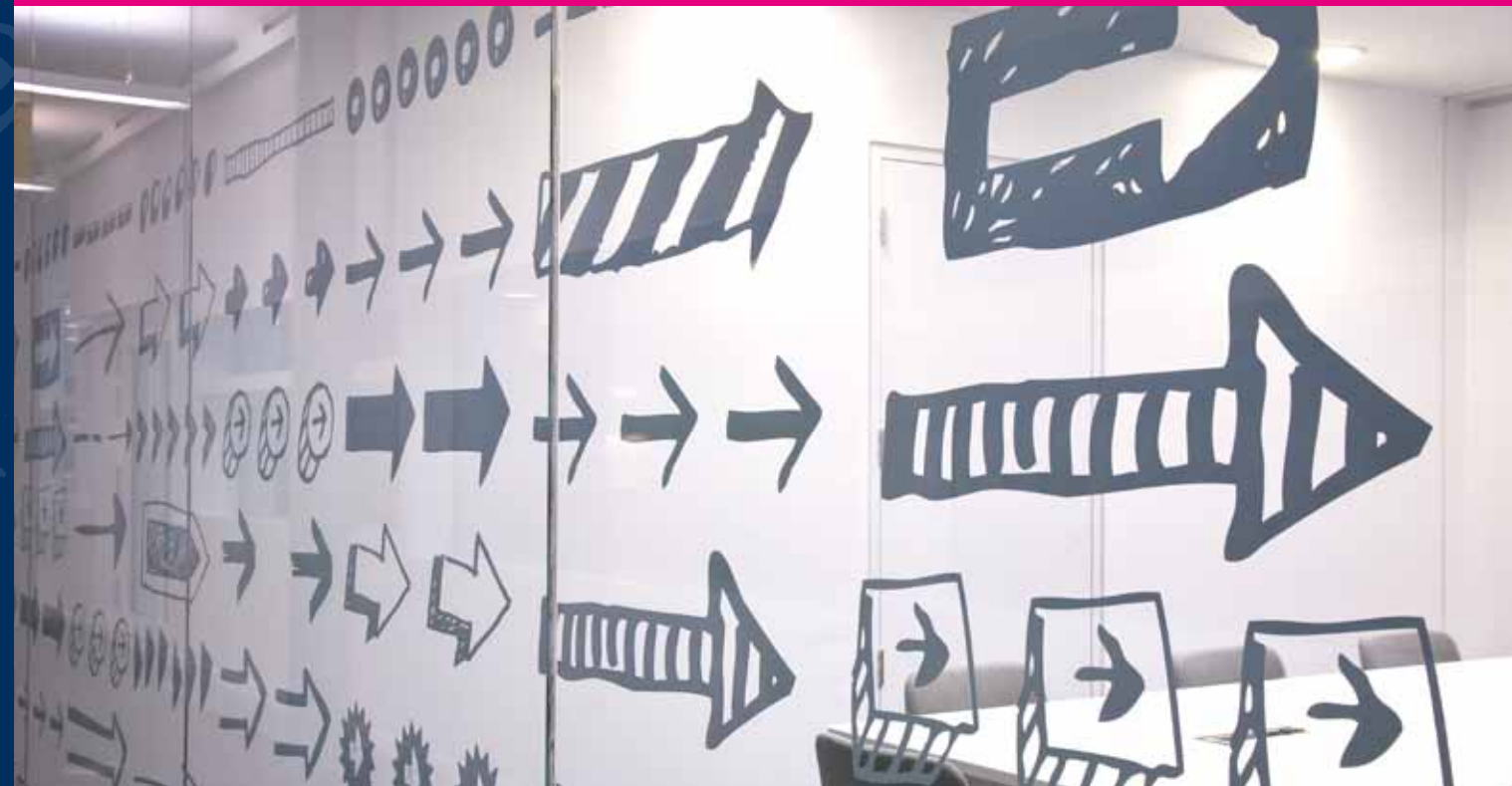
environmental graphics

# Leading by example

EG is the name behind the renowned digital print division of Signbox. Derived from the latin *exempli gratia*, meaning 'for example' and, true to this name, Signbox is leading by example with a versatile range of premium quality display products for the workplace environment.

The EG portfolio of revolutionary, large format display solutions is manufactured using our innovative Durst Omega 1 UV inkjet printer, that prints direct-to-surface on both rigid and flexible materials and sets new standards of quality for digital print processes. Indeed, it is primarily due to our strict compliance with the British Standard code of practice for sign manufacture, which demands materials are fire protected and specified for their suitability and longevity, that Signbox continues to execute world class signage solutions and exceed workplace expectations every time.

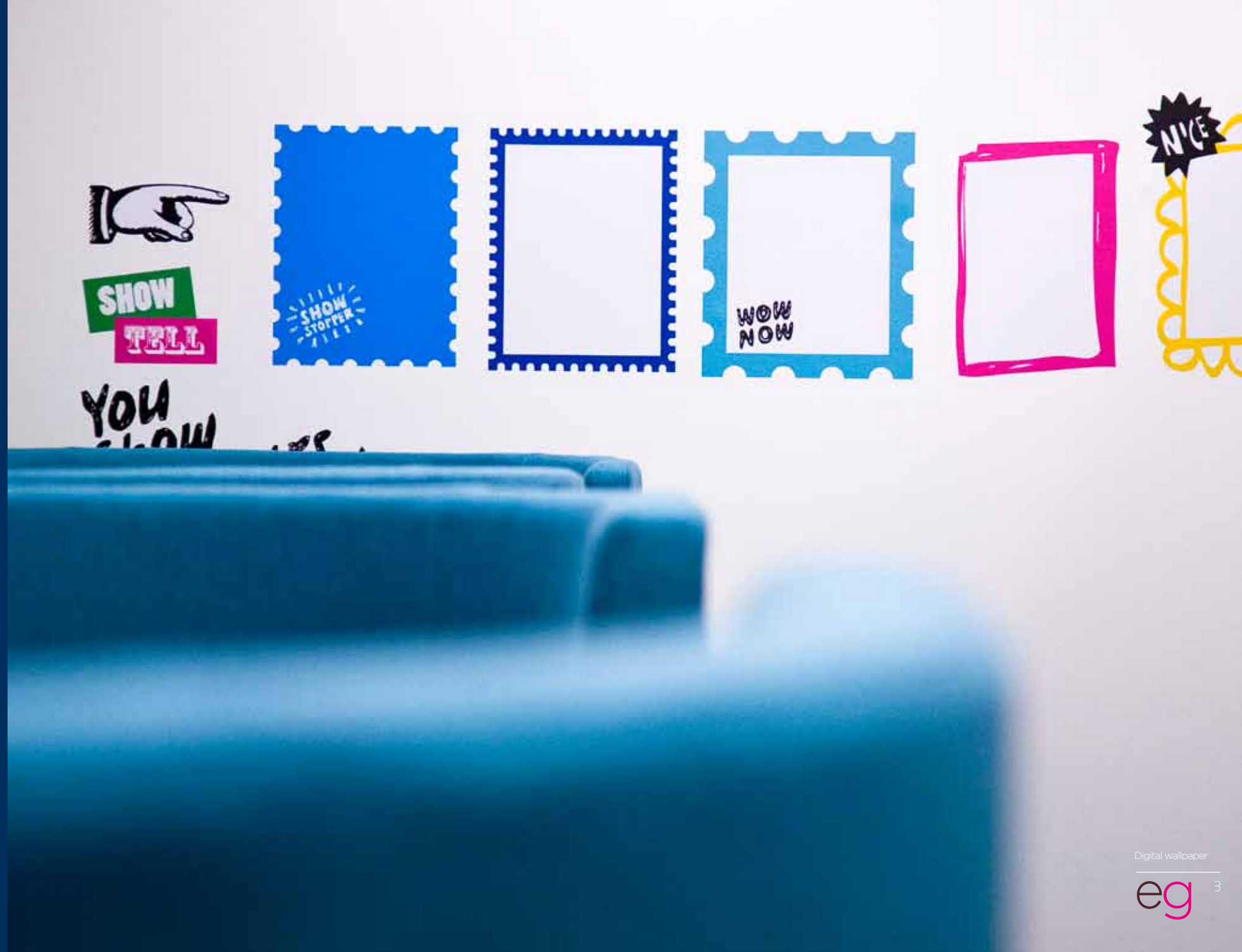
Signbox EG delivers next-generation display solutions that are designed exclusively for environments and applications that demand innovation and answer all the questions of aesthetics, practicality and corporate branding with consistency and grace.



# eg

## Digital Wallpaper

Digital wallpaper is an innovative display solution for workplace environments, dictating an inspirational approach that motivates, excites and conveys everything in style. The perfect solution for new build, contemporary and refurbished interiors, digital wallpaper is a flexible, eye-catching wallcovering that communicates the message, reinforces the brand identity and sets an unbelievable scene.





Signbox EG uses revolutionary printing technology to create outstanding, large format digital wallpaper graphics that are digitally printed onto Class 0 fire-rated, Digimura 2.1. We achieve a fine art quality on every print, producing bright and visually inspiring graphics that transform commercial spaces, add value to a business proposition and improve the productivity of its workforce.











There are no limits with Signbox EG digital wallpaper. This is convention-defying digital print technology that promises outstanding results for large format wallcoverings, regardless of the size of space and the medium you want to present. Photographs, graphics, corporate imagery, logos and text make even more of an impact on high quality digital wallpaper.





## Wayfinding wallpaper

Signbox EG wayfinding wallpaper adds a contemporary twist to more traditional directional sign systems and helps define a building's philosophy. These are enlightening, impactful signs that convey and inform intuitively while enhancing both the workplace environment and an organisation's corporate identity in limitless style.





ed











## Digital glazing

Signbox EG brings large format, customised digital imagery to ordinary, flat glass and transforms it into spectacular effects that enhance glazed partitions, screens and windows, safely and energy efficiently. We use environmentally friendly non-PVC films that are optically clear and hard coated with a scratch resistant finish, which makes them highly durable and cleanable. From high impact advertising, branding and decoration to more effective applications for privacy, manifestation and safety, our films render glass shatter resistant, block 99% of all UV rays and are fully DDA compliant.







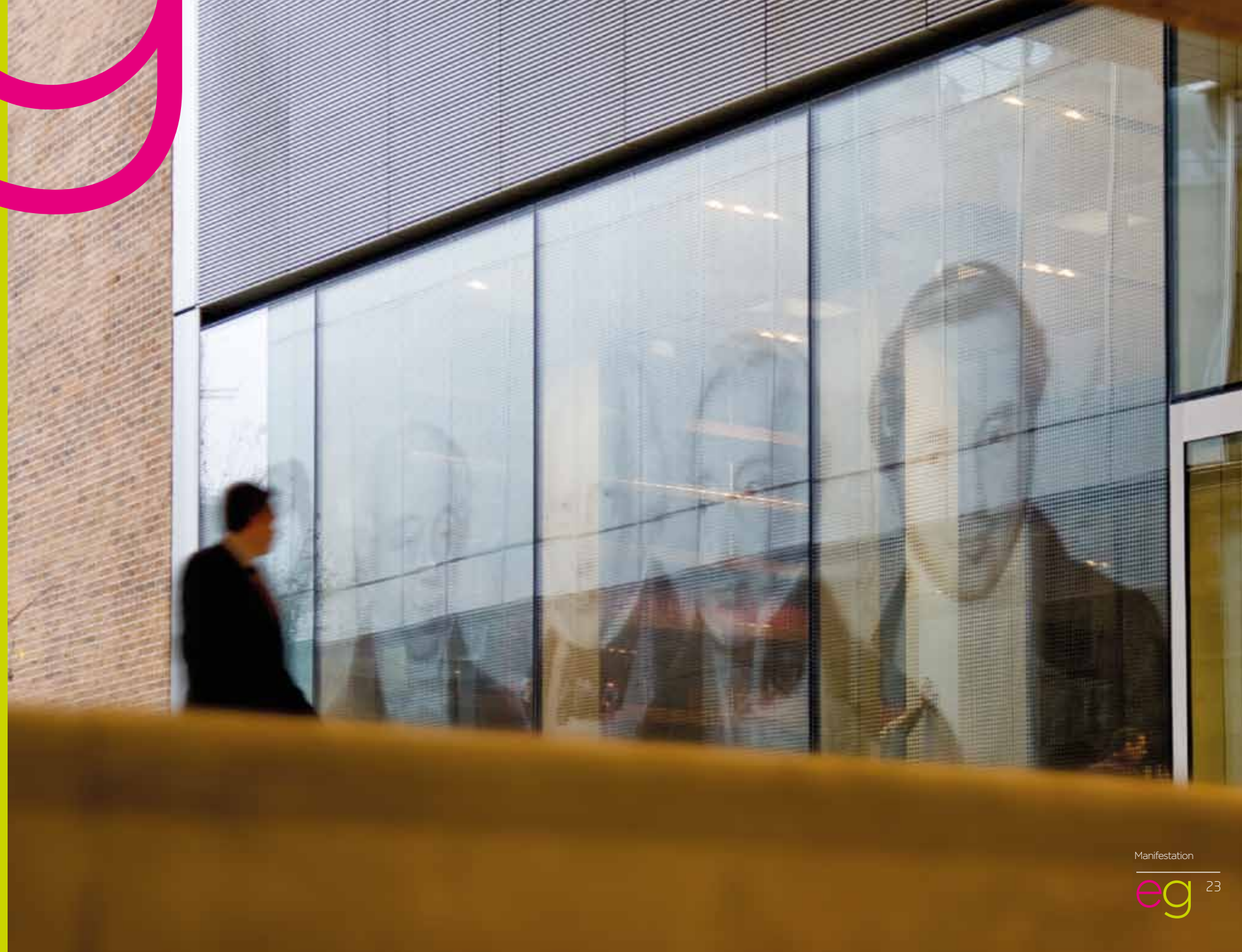






# Manifestation

Sharpen that brand and create a visual impact with glass enhancement films that transform interior office glazing into inspirational working environments. Signbox EG's cutting-edge glass manifestation solutions deliver cost-effective and environmentally sensitive signage solutions that meet the demands of corporate branding, privacy and workplace safety.



Digitally printed glass manifestation is designed to bring a blank canvas to life with customised and ultra dynamic large format graphics.

Within the office environment, this powerful glass treatment adds an incredible new dimension to glass, reaffirming a corporate identity and creating a stunning visual impact that delivers a sense of wellbeing and motivation to everyone within.

Etched effect vinyl graphics enhance the appearance of the office interior. This practical application provides a simple answer for designers and architects tasked with meeting the demands of workplace planning requirements and DDA regulations, while lending a seamless seclusion to break-out areas and meeting rooms.



The Code of Practice for glazed walls should conform to British Standard 6262:

*"The surface of glazed walls and screens that are adjacent to doors, or form part of an enclosure, should be clearly highlighted with a manifestation which contrasts visually with the surface behind it under both natural and artificial lighting conditions. This manifestation should be located within two zones, from 850 mm to 1000 mm from the floor and from 1400 mm to 1600 mm from the floor."*







Our CAD-cut vinyl provides a unique and impactful branding solution for glass by converting a plain blank panel into an eye-catching and distinctly memorable display of precision-cut letters, shapes and graphics.

Our transparent glazing film is available in a stunning range of colour tints to enhance clear glass partitions, furniture and decorative panels. A non-PVC film with a Class M fire rating, this film is suitable for internal applications with a 10-12 year durability.



©Réflectiv





## Poster Display

Poster Display is part of our collection of inspirational presentation fixings and panels and comprises a series of frameless, toughened glass or acrylic sandwich panels to display posters, point of sale information and a vast range of other media safely, securely and with undeniable impact.

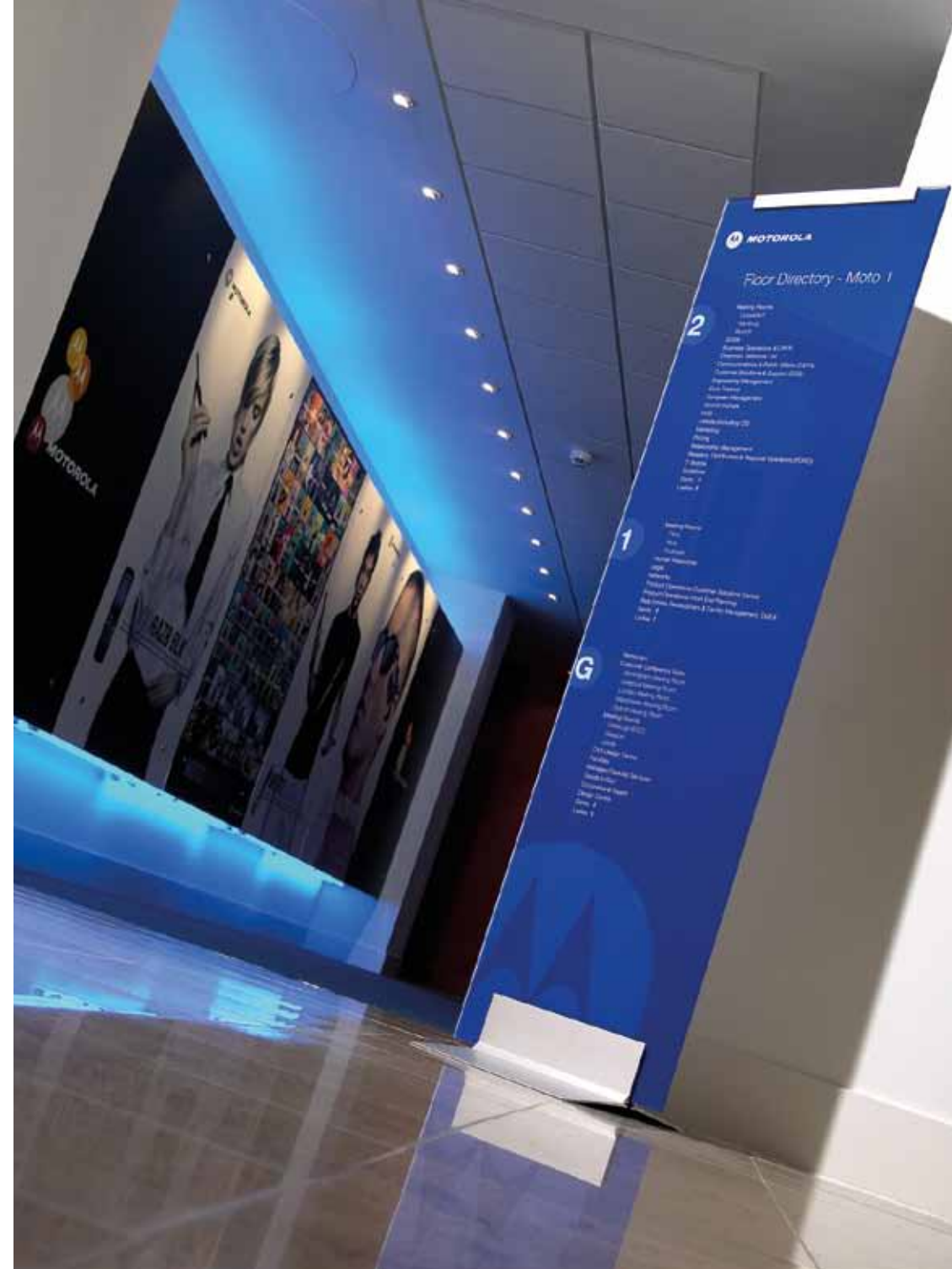
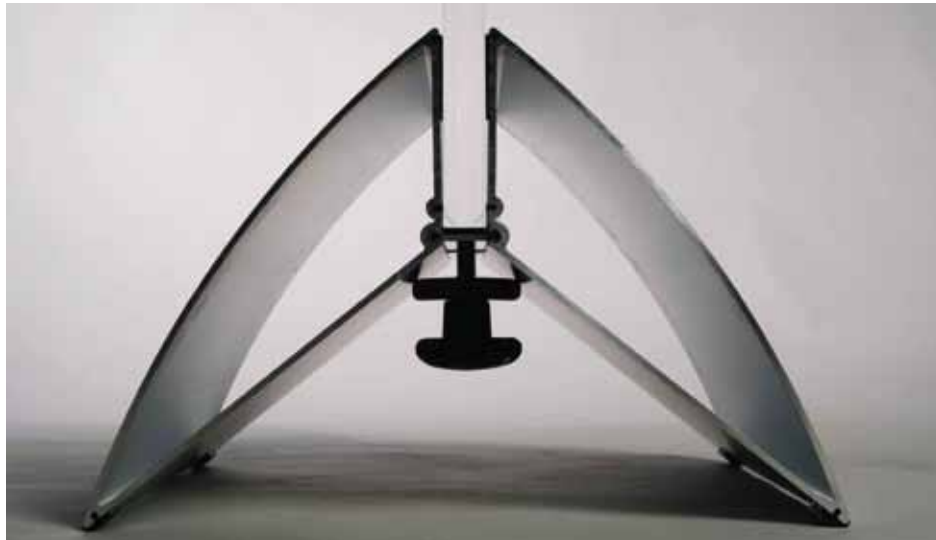
It's all in the detail; intelligent design, engineering excellence, clever use of revolutionary materials and smart production processes underpin our conceptual approach. It's driven by architects and designers with whom we work in partnership on the details that transform 2D ideas into breathtaking 3D reality.



Add Signbox EG digital print to the mix and Poster Display really comes to life. Available in a range of sizes, these safety glass panels are supported by precision-engineered fixings in stainless steel or satin anodised aluminium with protective sleeves and washers. Glass is supplied with polished edges in two thicknesses and in standard float or a low-iron optiwhite that eliminates the natural green tint of glass.







## FSS Footprint

Free-standing signage solutions are designed to be flexible and to cater for the demands of displayed media in areas where wall-mounted signage isn't structurally possible or aesthetically appropriate.

FSS Footprint is a stunning, internal free-standing display solution that's perfect for posters, notices, brochures and messages. It has a discreet and elegant design, which ensures attention is focussed on the information and not the hardware.

Available in two designs, FSS Footprint bases comprise two anodised, hinged aluminium extrusions with an aerofoil and a linear section. Supplied as standard, measuring 325mm wide, both models can be specified at any size up to 1000mm wide.



# Enlighten™ Smart Poster

Enlighten is next generation smart poster display and it's changing the way people navigate and interact with the brands and marketing messages that surround them.

Enlighten harnesses the power of near field communication (NFC) technology in a revolutionary and ultra stylish smart poster display system that sells products, delivers messages and directs people, instinctively. The tiny NFC chip embedded within the smart poster system interacts with an NFC enabled mobile phone to transfer data from the poster to the handset with a single swipe. Smart posters provide a unique marketing solution for everyone in an organisation that has a message to share. With the potential to

introduce new products, incentivise purchases or simply welcome and direct visitors; the opportunities for powerful communication with target audiences are limitless.

Powdered by a low-voltage LED light sheet, Enlighten is also energy-efficient with a warranted life of 50,000 hours, which qualifies companies for enhanced capital allowances (ECAs).

Enlighten is available in standard A series paper sizes A5 to A1 in illuminated or non-illuminated versions. A black or white mount is supplied as standard and branded or customised colour mounts are available to order.



# Mono Banner



Mono banners are a cost-effective and versatile screening solution and are manufactured using fire-rated fabric mesh, rendering them perfect for a diverse mix of applications. Signbox EG mono banners have taken pride of place as privacy screening for break-out areas in commercial offices and showrooms and have been used as influential displays for product launches, all the time working hard to reinforce that corporate brand.

We have a stunning collection of architectural fabrics, all specially profiled for digital printing to ensure a crisp, vibrant and accurate reproduction of media. We have also developed a range of precision-engineered fixings to support these eye-catching banners, including straight and flat hanging versions that are perfect for both temporary and permanent displays.

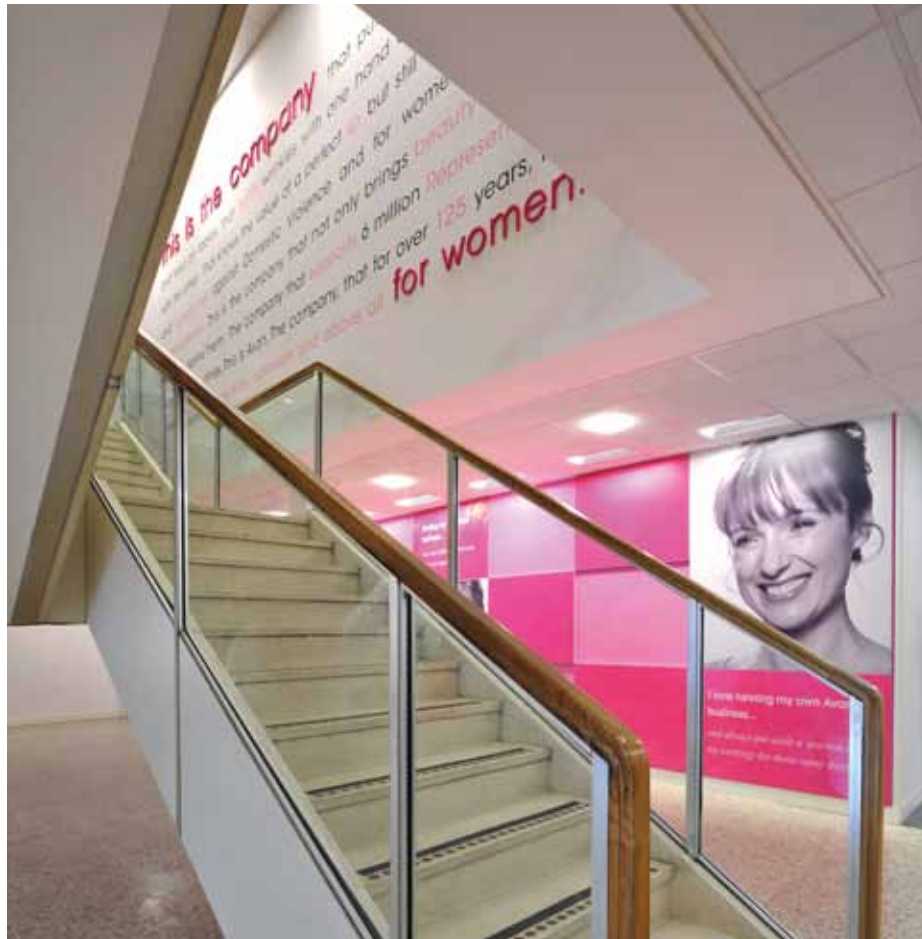




## Kube

Kube is possibly our most ingenious display solution; a frame system that dramatically enhances the impact of digitally printed signage. From just 25cm<sup>2</sup> to a supersize 3m x 10m, Kube is an über-cool, engineered framing system that adds a powerful architectural look to interior workplace environments.

This lightweight, frame and tension fabric system allows digitally printed materials to be displayed without creases and curls in wall-mounted, hanging or free-standing arrangements with single or double-sided screens for twice the impact.







## Kube continued

This, the ultimate graphic display solution, is available in multiple depths to create a series of entirely individual looks. Once your fabric has been digitally printed with your chosen imagery, Kube is ready and easy to assemble and is supplied flat packed with frame and brackets; a quick, user-friendly solution that makes it simple to update with a new digitally printed display for a fresh new look in minutes.





## Doodleglass™

Doodleglass is Signbox EG's revolutionary take on the dry wipe board. It gives enterprising office and hospitality environments a stylish new communication and presentation tool that suits every workspace, from meeting and training rooms to conference facilities and break-out areas.

Available in seven sizes with a white-back finish as standard, Doodleglass can be personalised with pre-set grids or charts and branded with company logo and imagery for a consistent approach to corporate identity.

Manufactured from 6mm toughened safety glass with radiused corners and supported by silver anodised Project fixings, Doodleglass sits compact and flat to the wall, penetrating the environment and providing a vivid focal point for any commercial space.



## Digital Canvas

Digital canvas prints are the perfect media for corporate art that really wants to stand out. From reception areas to meeting rooms, digital canvas can be used to reinforce corporate identity, convey a special message or to simply inject a splash of bold colour into an otherwise neutral environment. Images are inkjet printed onto specially profiled canvas at high resolution and stretched onto softwood frames ready for hanging with concealed split battens, creating a dramatic, and very beautiful, work of art.

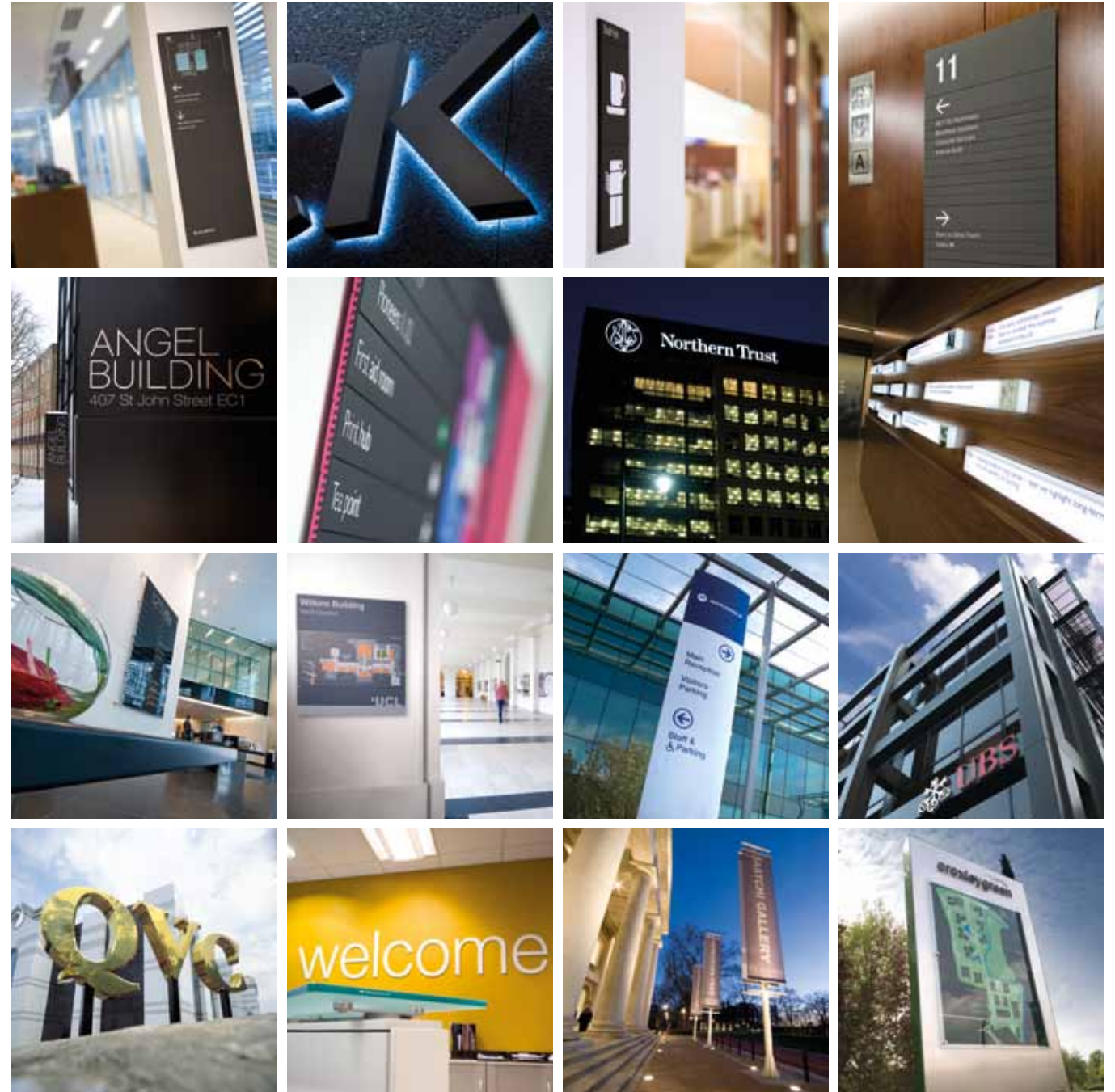
This dynamic display method is available in any size to cover spaces with bespoke art that ensures every application and every first impression is unique. Signbox EG can source digital images to print direct-to-canvas for clients who don't have their own imagery to convey exactly the right mood or message.



# The Signbox pedigree

The Signbox EG service is defined by the cutting-edge approach to sign design and unrivalled customer service that's synonymous with the Signbox name. Our project managers invest time and energy getting to the heart of the built environment, its physical form and its people to consistently create powerful signage schemes that work for everyone.

As a single-point resource for the design, manufacture and installation of sign products, we remain the specifier's first choice, working closely with project architects and developers to create bespoke branded signage systems that generate stunning visual impact and help shape the dynamics and ambience of the workplace environment.







## Kind words from a handful of clients who have put their trust in Signbox

“From inception to completion, Signbox’s attention to detail was unrelenting. This gave us the confidence that we had chosen the right contractor to deal with such an extremely complex and highly visible project.

Coupled with their responsiveness and openness, this made the whole project highly satisfactory.”

“All at Northern Trust would like to thank the Signbox team for making this project a great success.”

**Martin Clarke** - Vice President of Northern Trust’s Global Services Group Europe & Africa

“This system was chosen for its simplicity and ability to work well in both historic and new environments and we selected a Nextel paint finish to provide a good matt, but sophisticated finish to simple legend graphics and colouring.

We were very pleased with the attention and quality service provided by Signbox to manufacture and install the signs.”

**Sue Manley** – Placemarque

“The installed signage has generated much favourable comment from university staff, students and visitors, not only for its superb design and quality, but also for its effectiveness as a wayfinding tool.”

**Rosemary Clements** – UCL Design Services

“The redevelopment of this prestigious 75 acre business park required a complete review of the outdated signs and way finding key plans commissioned during the 80s and its replacement with an effective and contemporary solution.

The brief was required to both conform with existing corporate identity guidelines and meet with our commitment to deliver a greener working environment.

I am extremely pleased with the quality and effectiveness of the scheme which has dramatically improved traffic management and parking issues and have also received very positive feedback from major tenants!”

**Marcus Richardson** – Director, Greenhill

“Signbox demonstrated a good understanding of the brief right from the start and completed each stage of the project on schedule. We were kept well informed at all stages of the contract’s progress.

Signbox provided an excellent level of service teamed with high quality products. The team was extremely thorough and professional, which ensured the project ran without a hitch!”

**Rachel Dunthorne** – Hilton Procurement Manager, Technical Services





# Direct-to-surface



All these groundbreaking signage solutions are only possible thanks to the ingenuity of our digital printing processes. A powerful Durst Omega 1 UV inkjet printer sits at the core of the Signbox EG service, defining a new quality standard for digital printing and giving us the capability to print direct-to-surface on rigid or recyclable materials without compromise and obtaining perfect

results on transparent surfaces, including glass, acrylic and polyester film. The fine art printing quality of the Omega 1 is achieved by a resolution of up to 1728dpi, which ensures consistently accurate printing and is essential for us to offer and maintain the highest quality benchmarked standards that we're renowned for.

Kube photography by kind permission of Praxis, with photography by Philip Vile and Paul Mellows.

Printed by Quadrant Design and Print, Hertford.

Please don't bin me. Recycle me...or better still pass me on to a colleague! ♡





Uniclass L8456	EPIC Q611
Cl/StB (71.1)	X

# eg

**eg** is a division  
of Signbox Ltd

Unit 3  
Egham Business Village  
Crabtree Road  
Egham, Surrey  
TW20 8RB  
T 01784 438688  
F 01784 471694  
sales@signbox.co.uk  
www.signbox.co.uk



INVESTOR IN PEOPLE