



out of the box

December 2010

news, views and updates from Signbox



A Star is Born

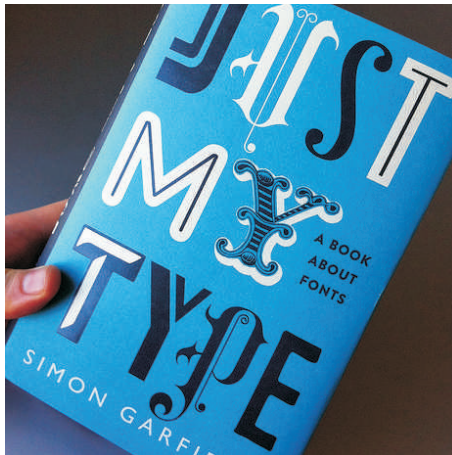
Following a successful reveal at the recent London Sleep Event 2010, Signet enjoyed star status amongst the new products on show.

Signet is the perfect luminaire for wayfinding and branding now the shortened days are upon us and incorporates the latest LED technology.

Signet is a fit and forget IP67 rated device, housed within a sleek and elegant profile, finished in a silver anodised aluminium.

This glare free luminaire comes complete with structural glass fixings to support a 10mm thick toughened glass panel. The stainless steel security fixings are countersunk to fit flush, with branding or wayfinding, reverse-printed onto the glass.

Signet is available from stock with an A3 size panel in either portrait or landscape format and graphics can be CAD-cut, screen or digitally printed vinyl. Other sizes and material finishes to special order.



Bearing Gifts

2010 has almost run its course and 'tis now the season to be jolly!!

So we have a fabulous offer this month with all eshop sales over £75 plus vat, receiving a complementary gift in the form of a delightful book called 'Just My Type'.

The author Simon Garfield says he's unable to walk past a sign until he has identified the typeface. Now, neither will you, with this fascinating and fun book that gives an insight into the use of type throughout the ages.

Please visit our eshop on signboxshop.co.uk. Upon receipt of your order, we will despatch your book under separate cover.

Doodleglass is the perfect present for all those New Year resolutions and key objectives. Order this month and receive a 10% discount - just enter DOODLE in the check out.

Merry Christmas & Happy New Year from all of us at Signbox.



Shining Bright

Signage is integral to brand identity. It helps to enforce that strong statement about what an organisation stands for, how it should be perceived, what it represents.

Signs are also instrumental in presenting that vital, positive first impression.

This fact underpins our creative approach and Signbox have developed an energy efficient LED light sheet for the illumination of both internal and external architectural signs.

The low-energy consumption of our LED light sheet and the durability of water jet cut stainless steel, met the exacting customer requirements for the fit-out of offices for Banco Do Brasil.

Talk to us now to find out how we can create dramatic visual effects to contrast with the mood and atmosphere within a building.

Please [click here](#) for more information.